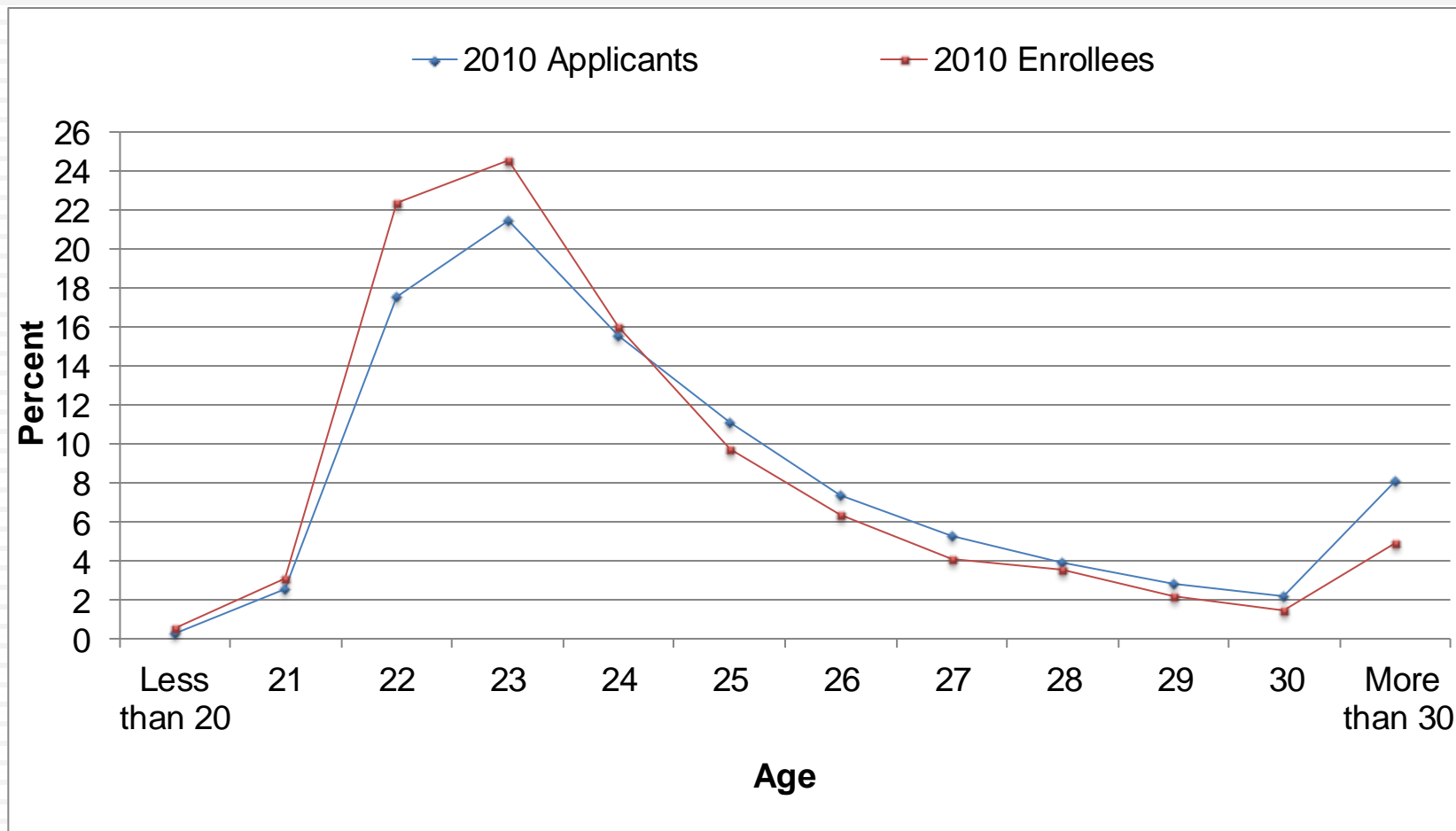


# Age Distribution of Dental School Applicants and Enrollees, 2010



American Dental Education Association

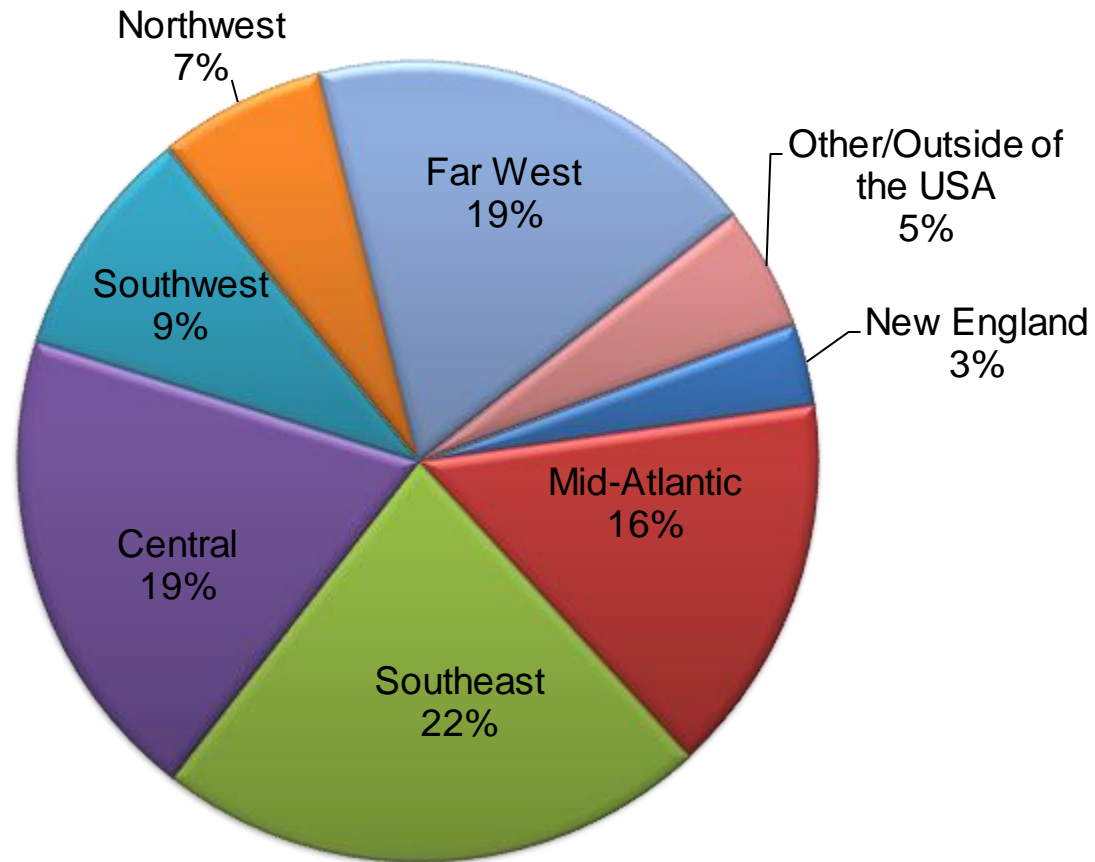


Source: American Dental Education Association, U.S. Dental School Applicants and Enrollees, 2009 and 2010 Entering Classes

# Geographical Source of Dental School Enrollees, 2010



American Dental Education Association



Source: American Dental Education Association, U.S. Dental School Applicants and Enrollees, 2009 and 2010 Entering Classes.

# Percent of Applicants and Enrollees by Range of DAT Scores, 2010



American Dental Education Association

DAT Scores	< 14	14 - 16	17 - 18	19 - 20	21+
<b>Applicants</b>					
Academic Average	1.7	18.3	36.1	30.8	13.1
Perceptual Ability	2.7	17.7	24.9	29.4	25.3
Total Science	2.5	20.5	31.9	28.6	16.6
<b>Enrollees</b>					
Academic Average	0.1	4.9	28.9	43.1	22.9
Perceptual Ability	0.7	10.1	22.0	33.9	33.3
Total Science	0.1	6.7	26.6	38.2	28.4

Source: American Dental Education Association, U.S. Dental School Applicants and Enrollees, 2009 and 2010 Entering Classes

# Percent of Applicants and Enrollees by Range of Grade Point Averages, 2010



American Dental Education Association

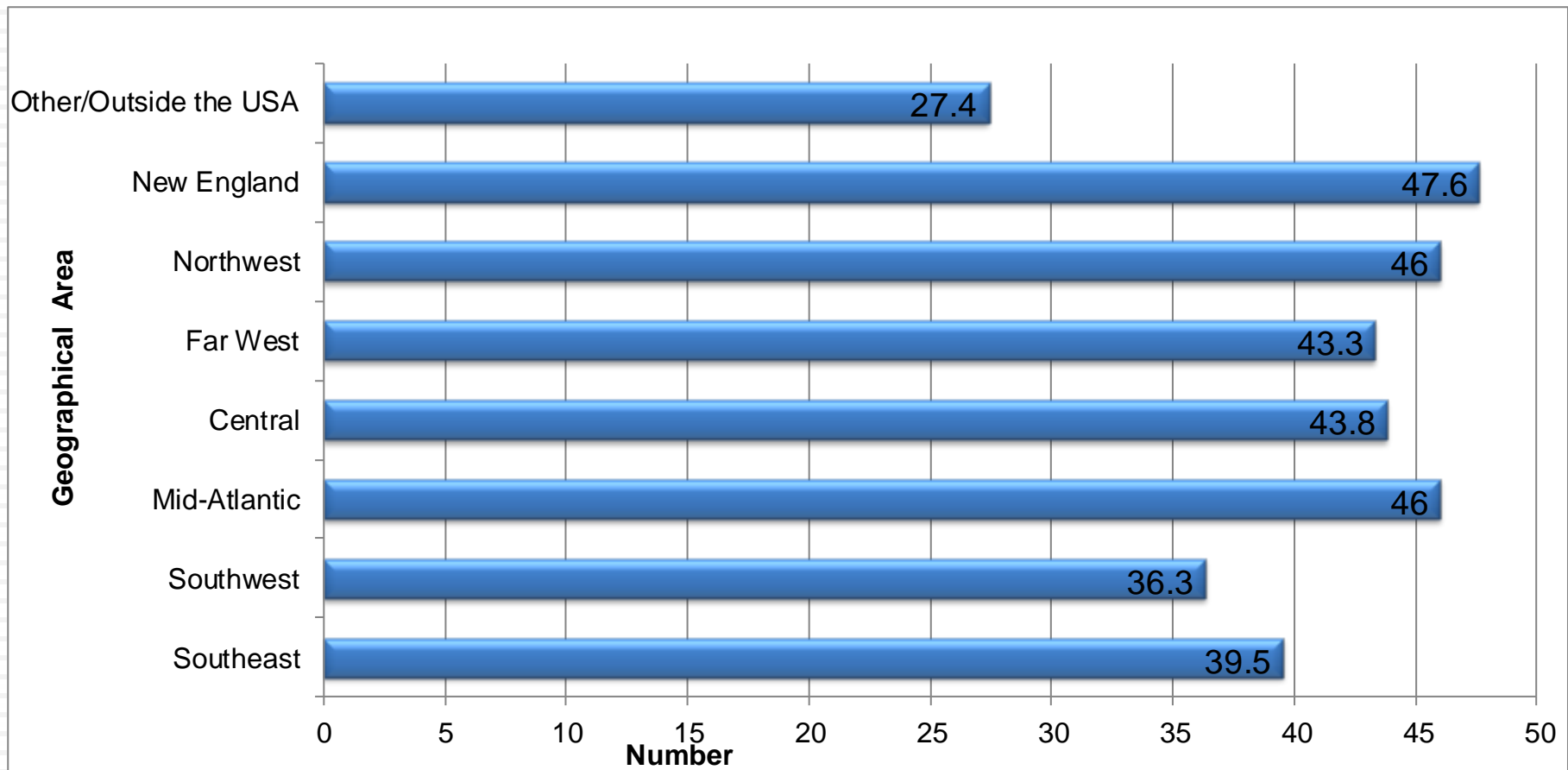
GPA Scores	< 2.50	2.50 – 2.74	2.75 – 2.99	3.0 – 3.24	3.25 – 3.49	3.5 – 3.74	3.75+
<b>Applicants</b>							
Science GPA	<b>5.7</b>	<b>6.9</b>	<b>13.2</b>	<b>21.0</b>	<b>21.7</b>	<b>17.6</b>	<b>13.9</b>
Total GPA	<b>2.5</b>	<b>4.5</b>	<b>9.8</b>	<b>18.9</b>	<b>26.4</b>	<b>22.5</b>	<b>15.3</b>
<b>Enrollees</b>							
Science GPA	<b>0.6</b>	<b>1.8</b>	<b>5.8</b>	<b>16.8</b>	<b>24.7</b>	<b>26.0</b>	<b>24.3</b>
Total GPA	<b>0.2</b>	<b>1.1</b>	<b>3.4</b>	<b>11.7</b>	<b>25.4</b>	<b>31.7</b>	<b>26.4</b>

Source: American Dental Education Association, U.S. Dental School Applicants and Enrollees, 2009 and 2010 Entering Classes

# Percent of Applicants from Various Geographical Areas Enrolled in Dental School, 2010



American Dental Education Association



Source: American Dental Education Association, U.S. Dental School Applicants and Enrollees, 2009 and 2010 Entering Classes

# Predental Majors of Applicants and Enrollees, 2010



American Dental Education Association

Predental Major	% of Applicants	% of First Time Enrollees	% of Enrollees	% Enrollment Rate
Language, Humanities, Fine Arts	2.8	2.9	2.9	42.1%
Social Sciences	5.8	5.5	5.5	38.7%
Biological Science	37.1	38.2	38.2	42.5%
Chemistry/Physical Science	12.6	13.6	13.6	44.7%
Math/ Computer Science	1.0	1.0	0.9	39.8%
Engineering	1.9	2.1	2.1	45.4%
Education	0.3	0.4	0.4	42.9%
Business	3.2	3.0	2.9	37.5%
Pre-dentistry	3.8	2.8	2.8	30.9%
Other Major	3.1	2.8	2.8	36.5%
No Major/ Missing	0.8	0.5	0.5	28.1%
Missing Data	27.5	27.3	27.4	40.9%
Total	100	100	100	41.3%

Source: American Dental Education Association, Applicant Analysis Survey 2009-10, Using NCES BPS major field coding system